



NCTCOG TRANSPORTATION - PUBLIC MEETING

# FOREST HILL DRIVE STUDY

MICHAEL MORRIS, P.E. - DIRECTOR OF TRANSPORTATION

JODY LOZA - PROGRAM MANAGER

SHAWN CONRAD - PRINCIPAL TRANSPORTATION PLANNER

4.8.2024

# AGENDA

Introductions

Description and Purpose – Michael Morris

Who is NCTCOG

Project Overview

Additional Funding – Michael Morris

Traffic Signals Upgrades – Michael Morris

Flood Study Updates – Jody Loza

Proposed Alignment Review – Jody Loza

Traffic Volume Projections – Michael Morris

Roadway and Bike/Ped Recommendations – Shawn Conrad

Next Steps – Jody Loza

Public Outreach – Jody Loza

Questions/Comments/Feedback



# NORTH CENTRAL TEXAS COUNCIL OF GOVERNMENTS

## Description and Purpose

**Established in 1966 as a voluntary association assisting local governments in North Central Texas region:**

PLANNING for common needs, COOPERATING for mutual benefit, and COORDINATING for sound regional development

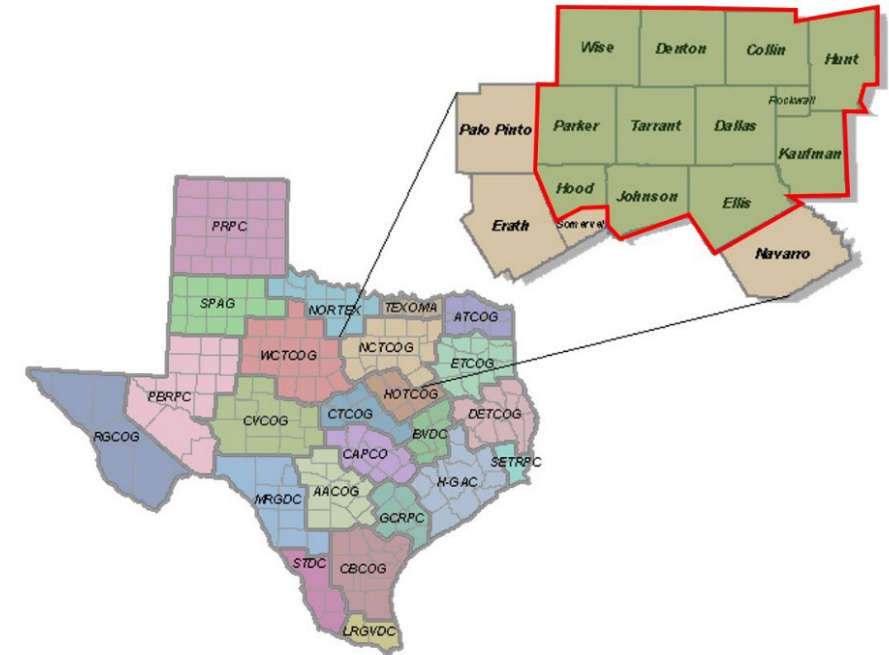
228 Members – 16 Counties, 169 Cities, 19 School Districts, and 24 Special Districts

**Federally designated as region's Metropolitan Planning Organization in 1974:**

**Regional Transportation Council (RTC) – Policy Authority**

*(44 members – 37 elected officials and 7 transportation providers)*

**Executive Board – Fiduciary Agent** *(18 members – elected officials)*



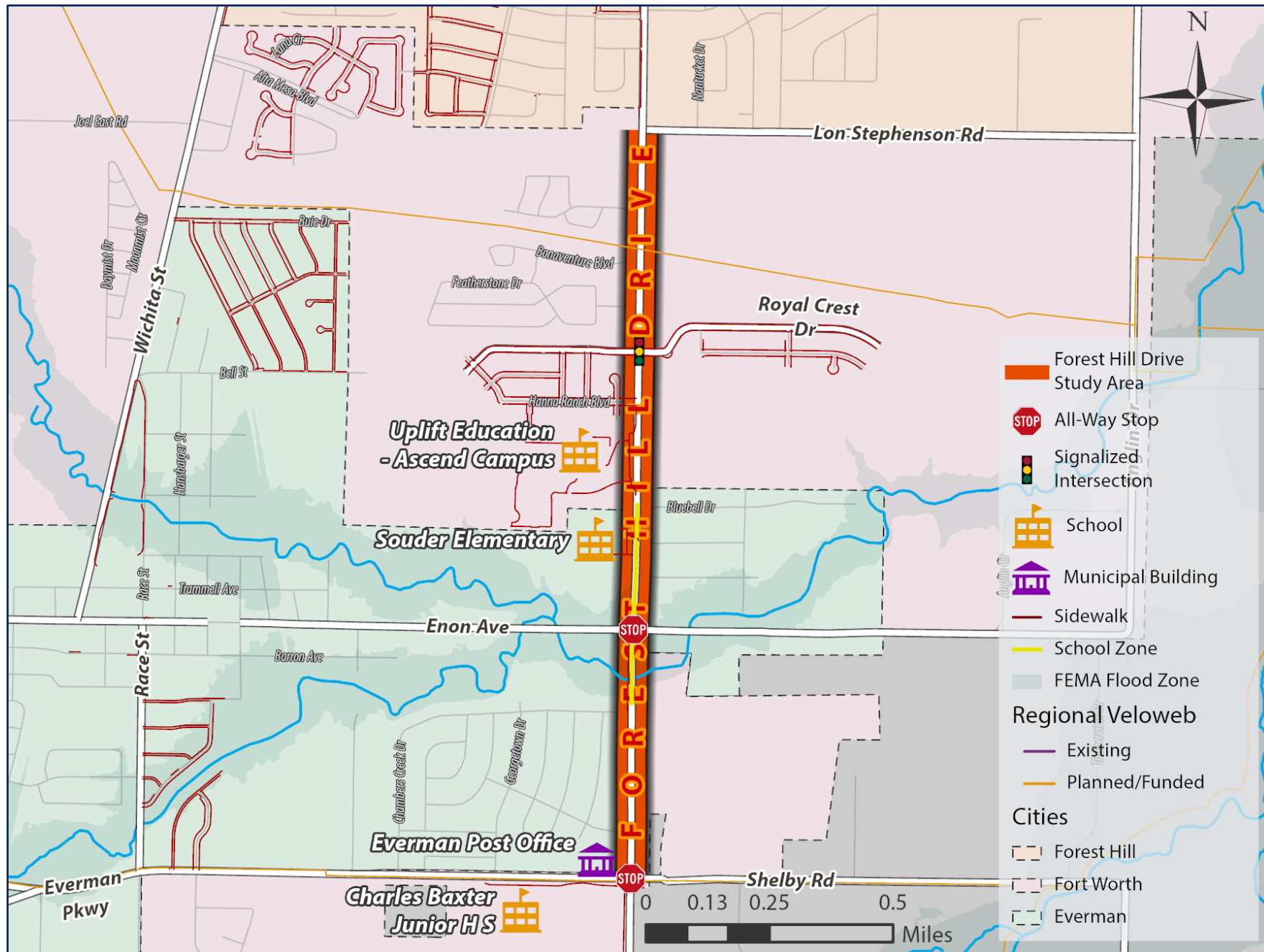
# OBJECTIVE: FOREST HILL DRIVE STUDY

NCTCOG shall identify the specific throughfare location and number of lanes for **Forest Hill Drive** in Forest Hill, Fort Worth, and Everman. This project will focus on the following: storm water impacts (\$110,000\*), traffic signals (\$500,000), and comprehensive thoroughfare conceptual engineering (\$2.5 M). The goal is to alleviate congestion through road-widening, while having the least impact on existing properties.

\* Storm water study being conducted by the City of Fort Worth and Tarrant County; fully funded by NCTCOG



# FOREST HILL DRIVE – STUDY AREA OVERVIEW MAP



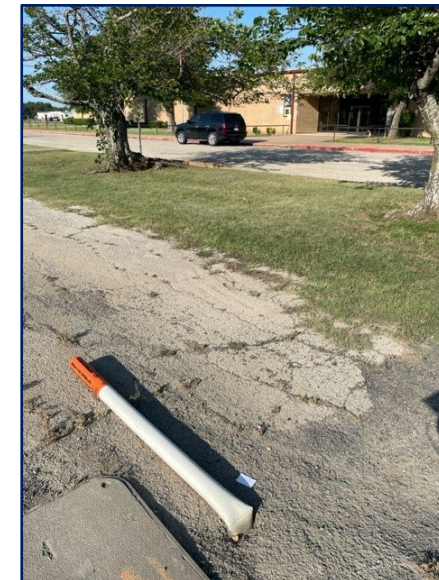
- Forest Hill Drive Study Area
- All-Way Stop
- Signalized Intersection
- School
- Municipal Building
- Sidewalk
- School Zone
- FEMA Flood Zone
- Regional Veloweb**
- Existing
- Planned/Funded
- Cities**
- Forest Hill
- Fort Worth
- Everman



# FOREST HILL DRIVE – STUDY DETAILS

## Tasks Completed to Date:

- Traffic Signal Study
- AM/PM/Off-Peak Traffic Counts – Three Site Visits
- School Dismissal Observation – Site Visit
- Bike/Pedestrian Walk Audit – Site Visit
- Data Analysis
- Development of GIS Maps
- Land Use Evaluation
- Development of Public Outreach Items
- Development of Website Landing Page for the Study Area
- Meetings with Elected Officials and City Leaders
- Meetings with landowners and developers along the corridor
- Traffic impact analysis for build and no-build scenarios
- Continued coordination with Tarrant County and the City of Everman to complete the Everman Flood Study



# ADDITIONAL FUNDING

# RECENTLY AWARDED FUNDING FOR FOREST HILL DRIVE IMPROVEMENTS

\$20 M of Surface Transportation Block Grant (STBG) funding approved by the Regional Transportation Council for construction at their February 2024 meeting

100% federal funding (required match to be covered by Transportation Development Credits)

Allows the project to proceed to construction once consensus on specific improvements is reached and project is designed

Currently have \$500 K for traffic signals and \$2.5 M for design

Funding for Flood Study and Planning Study underway





# TRAFFIC SIGNAL UPGRADES

# TRAFFIC SIGNAL OPERATIONS IN FOREST HILL

Traffic signal queues for both eastbound (EB) and westbound (WB) frontage roads of IH 20 and Forest Hill Drive were backing up on the freeway.

City of Forest Hill, NCTCOG and Texas Department of Transportation (TxDOT) conducted a study to identify the problem and develop recommendations.

Three traffic signals were reviewed.

CITY	LOCATION	OPERATIONS & MAINTENANCE
FOREST HILL	IH 20 EB & FOREST HILL DRIVE	TxDOT
FOREST HILL	IH 20 WB & FOREST HILL DRIVE	TxDOT
FOREST HILL	FOREST HILL DRIVE & FOREST HILL CIRCLE	FOREST HILL



# TRAFFIC SIGNAL RECOMMENDATIONS

Based on the study conducted, the following recommendations were made:

The equipment at the two TxDOT traffic signals at IH 20 and Forest Hill Drive has recently been upgraded, and no signal improvements are needed.

The outdated traffic equipment at Forest Hill Dr. and Forest Hill Cr. prompted a \$500,000 allocation from the Transportation Improvement Program (TIP) for a traffic signal upgrade in FY 2024. Post-consultant completion of the design, the city will revise the cost estimate and NCTCOG will allocate additional funds as necessary. Reconstruction is anticipated by 2026 at the earliest, more likely by 2027.

After the upgrade is completed, NCTCOG will add it to the regional traffic signal retiming program to coordinate signals.

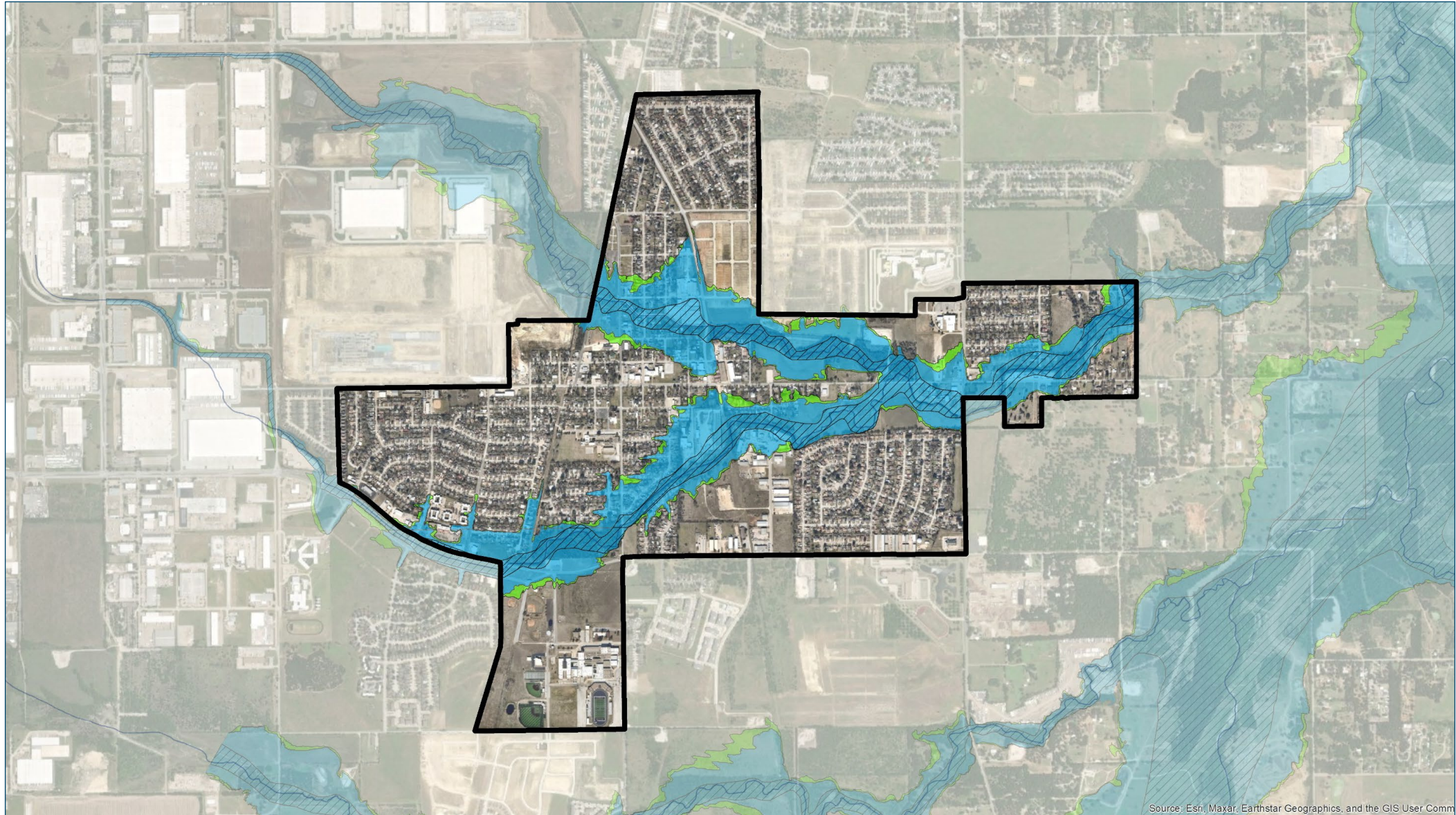


# CITY OF EVERMAN FLOOD STUDY

Tarrant County and the City of Fort Worth conducted a flood study for the City of Everman and surrounding areas in attempt to decrease the impacts of flooding in this region. A City Council meeting was held on **March 5<sup>th</sup>** to review the draft study results. The engineering firm is waiting on final comments from Tarrant County and the final report is anticipated to be published in April. The study's results will be used to guide the transportation redesign of **Forest Hill Drive** between LonStephenson Road and Shelby Road.



# CITY OF EVERMAN FLOOD STUDY AREA



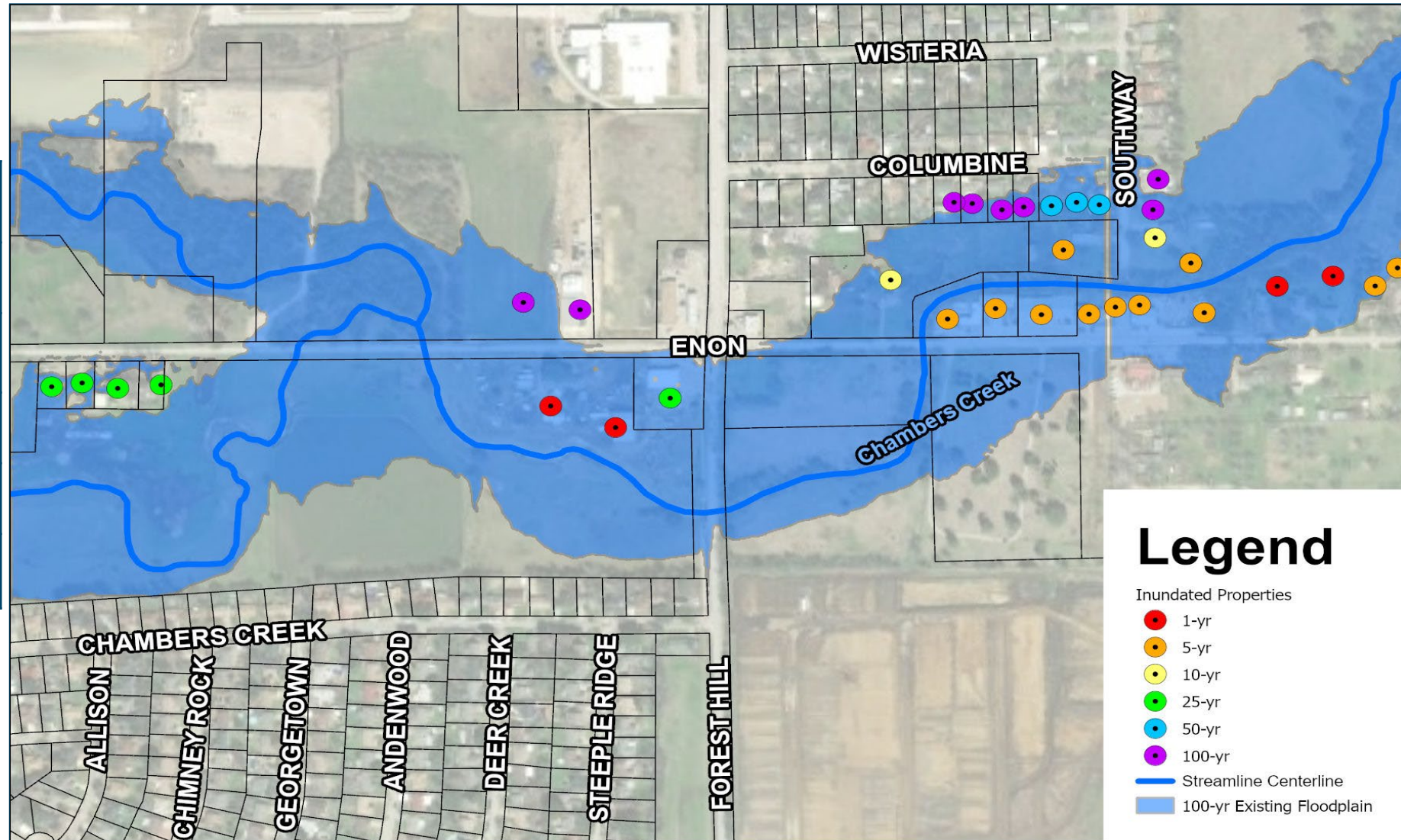
# CITY OF EVERMAN FLOOD STUDY – DRAFT RESULTS

## Problem Area: E. Enon Ave. & Forest Hill Dr.

### Existing Conditions

Properties Inundated By:

1-year event	4
5-year event	12
25-year event	17
100-year event	28



Bridges Level of Service less than 1-year event.



# CITY OF EVERMAN FLOOD STUDY – DRAFT RESULTS

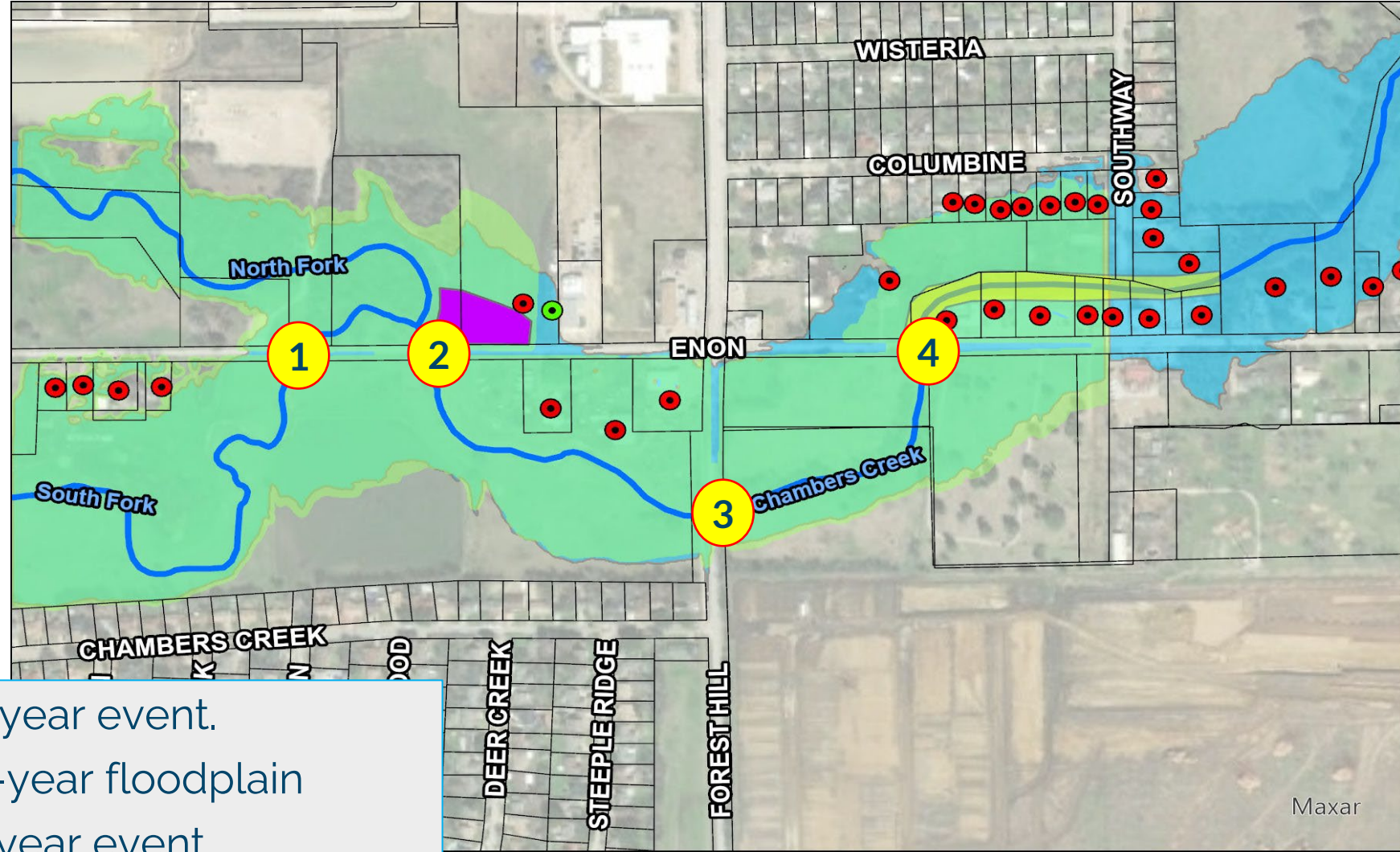
## Problem Area: E. Enon Ave. & Forest Hill Dr.

### Proposed Improvements

*Intersection transitions may ultimately impact bridge height.*

- 1 100-ft Bridge, ~3' height increase
- 2 200-ft Bridge, ~5' height increase
- 3 300-ft Bridge, ~7' height increase
- 4 10 - 10' x 10' Culverts, ~5' height increase

 Gabion Channel/Wall



Removes 8 properties from 5-year event.  
Removes 1 property from 100-year floodplain  
Bridge Level of Service = 100-year event.

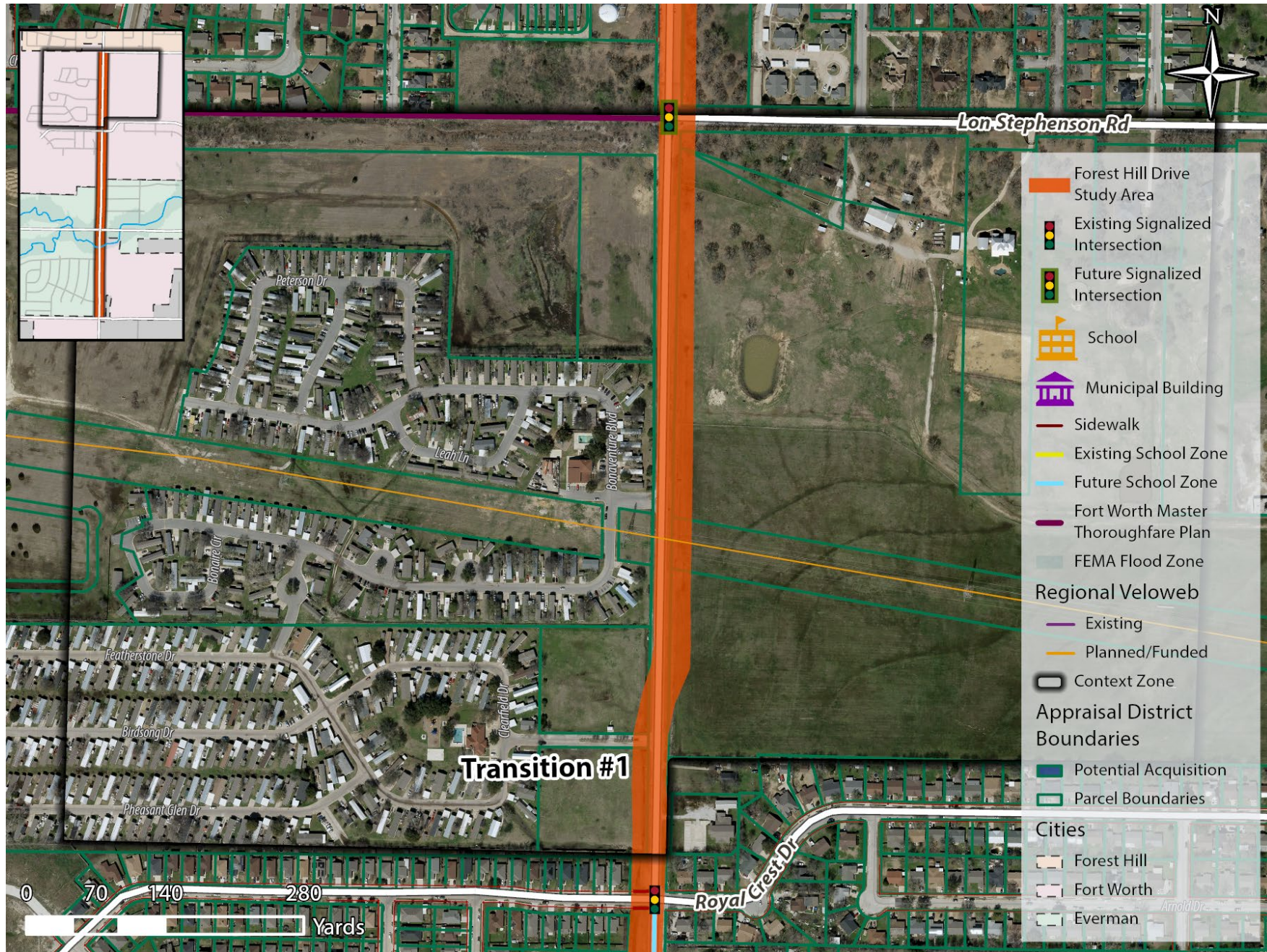
**Cost Estimate: \$13.2M**



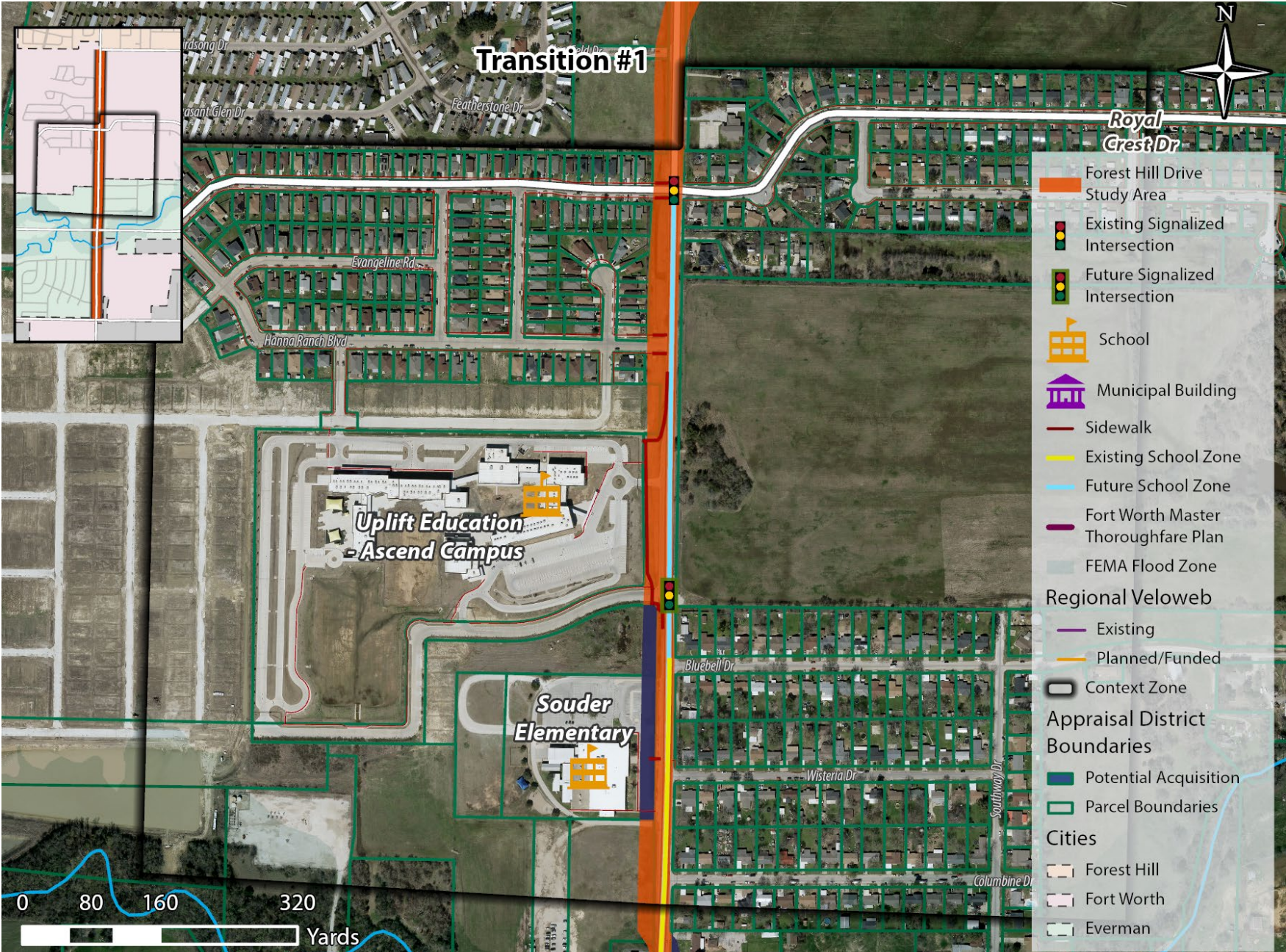
# PROPOSED ALIGNMENT REVIEW



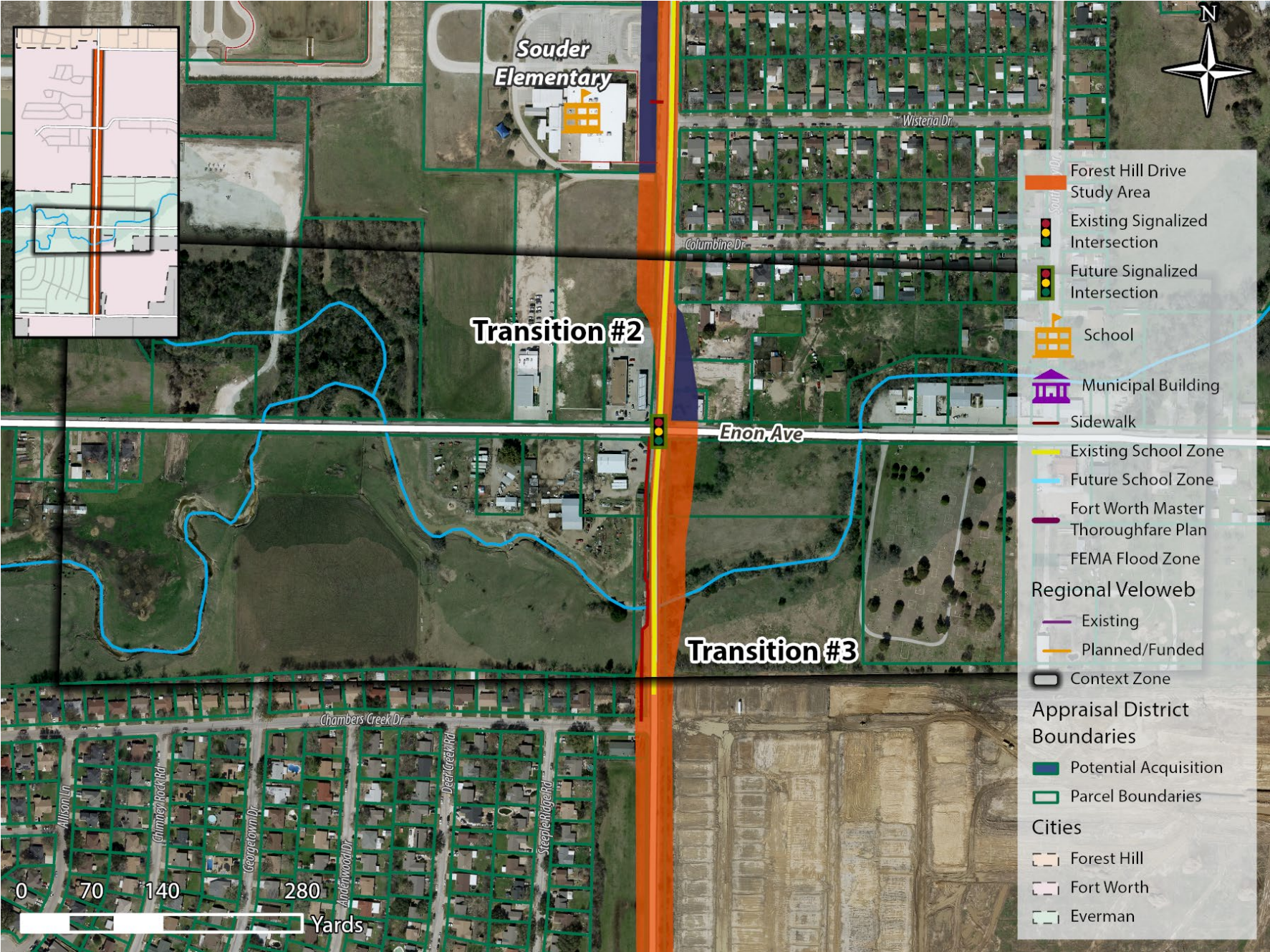
# FOREST HILL DRIVE – PROPOSED WIDENING AND ALIGNMENT (SECTION 1)



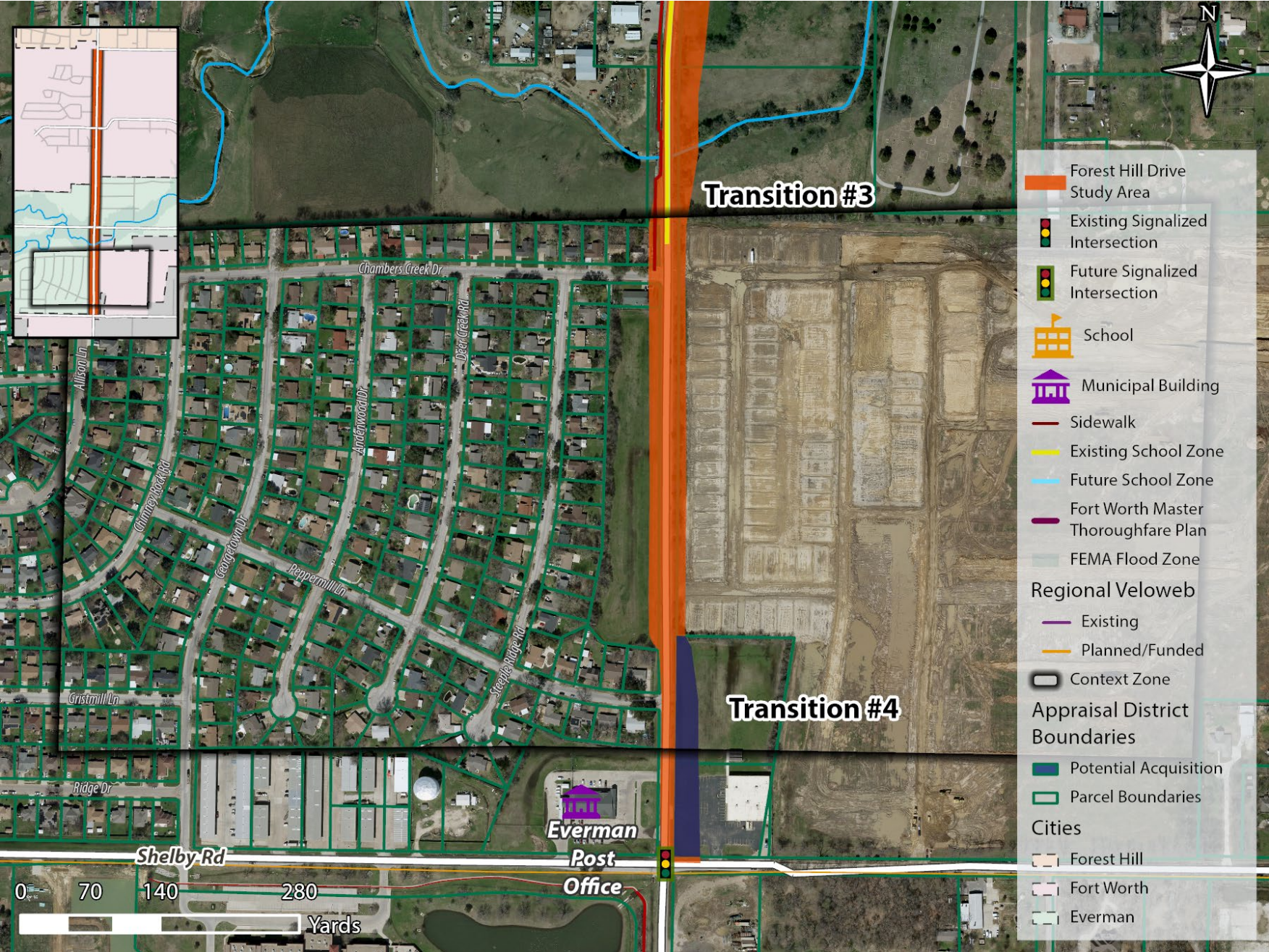
# FOREST HILL DRIVE – PROPOSED WIDENING AND ALIGNMENT (SECTION 2)



# FOREST HILL DRIVE – PROPOSED WIDENING AND ALIGNMENT (SECTION 3)



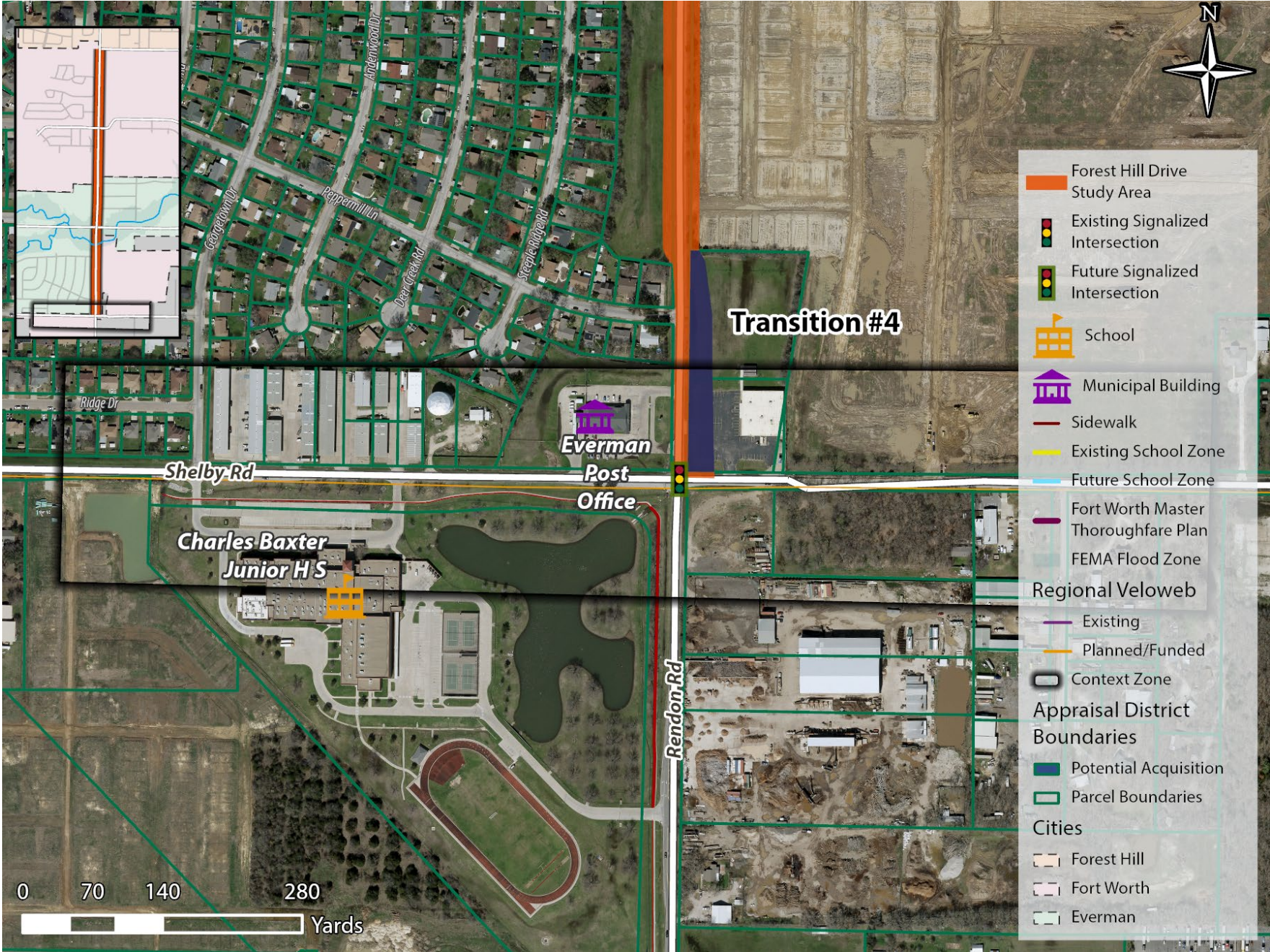
# FOREST HILL DRIVE – PROPOSED WIDENING AND ALIGNMENT (SECTION 4)



- Forest Hill Drive Study Area
- Existing Signalized Intersection
- Future Signalized Intersection
- School
- Municipal Building
- Sidewalk
- Existing School Zone
- Future School Zone
- Fort Worth Master Thoroughfare Plan
- FEMA Flood Zone
- Regional Veloweb
  - Existing
  - Planned/Funded
- Context Zone
- Appraisal District Boundaries
- Potential Acquisition
- Parcel Boundaries
- Cities
  - Forest Hill
  - Fort Worth
  - Everman



# FOREST HILL DRIVE – PROPOSED WIDENING AND ALIGNMENT (SECTION 4)



# TRAFFIC VOLUME PROJECTIONS

# FOREST HILL DR/ALTAMESA BLVD – YEAR 2045 VOLUME PROJECTIONS

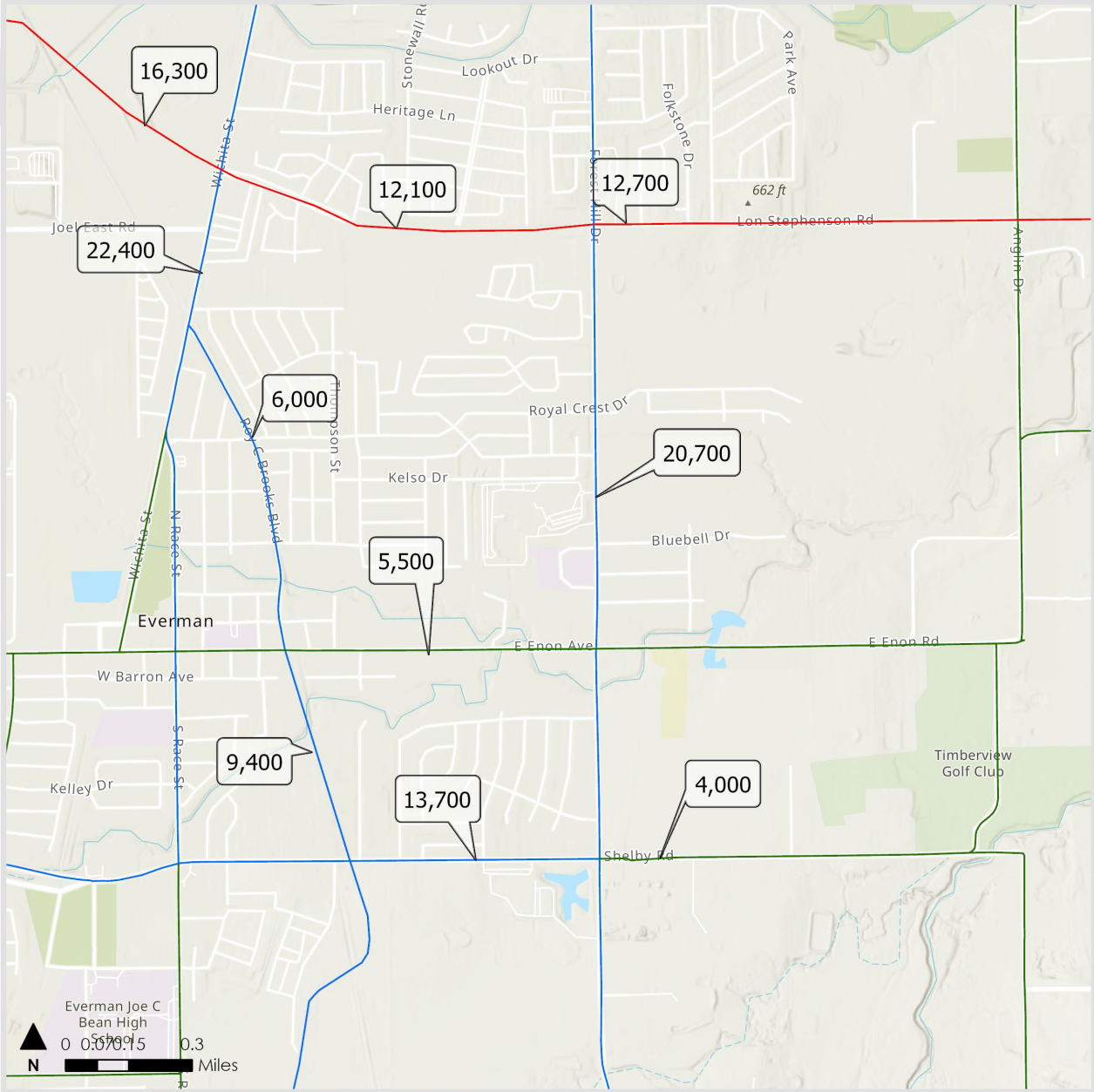
## FOREST HILL DRIVE

**Traffic Volume**  
**DRAFT DOCUMENT** (March 2024)

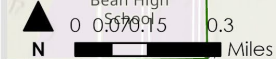
Volume ranges based on a modified Mobility 2045 Update network and 2019 Traffic Counts

### Legend

- Functional Class
- Freeway
  - Principal Arterial
  - Minor Arterial
  - Collector
  - Ramp
  - Frontage Road
  - Express Lane



North Central Texas  
 Council of Governments



Baylor University, Tarrant County College, City of Fort Worth, Texas Parks & Wildlife, COAH/TP, Est, TomTom, Garmin, SafeGraph, Geotechnologies, Inc., I/ET/USA, USGS, EPA, NPS, US Census Bureau, USDA, USFWS, Est, HASA, HGA, USGS, FEMA

# ALTAMESA BLVD EXTENSION – YEAR 2045 VOLUME DIFFERENCE

## FOREST HILL DRIVE

Full Build Volume Difference  
**DRAFT DOCUMENT** (March 2024)

### Legend

#### Volume Increase

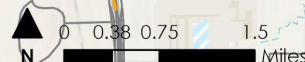
- 400-800
- 800-1,200
- 1,200-2,000
- 2,000-4,000
- 4,000-8,000
- 8,000-17,000

#### Volume Decrease

- 400-800
- 800-1,200
- 1,200-2,000
- 2,000-4,000
- 4,000-8,000
- Roadway Network



North Central Texas  
 Council of Governments

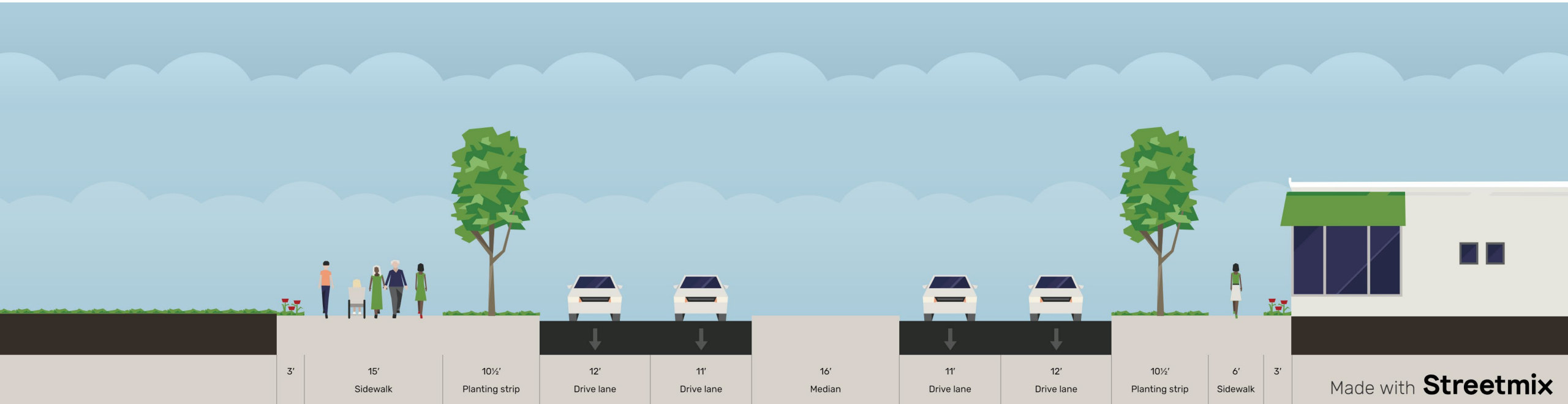


Esri, NASA, NGA, USGS, Baylor University, Tarrant County College, City of Fort Worth, Texas Parks & Wildlife, COHANIP, Esri, TomTom, Garmin, SafeGraph, Geotechnologies, Inc., I/ETI/NASA, USGS, EPA, NPS, USDA, USFWS

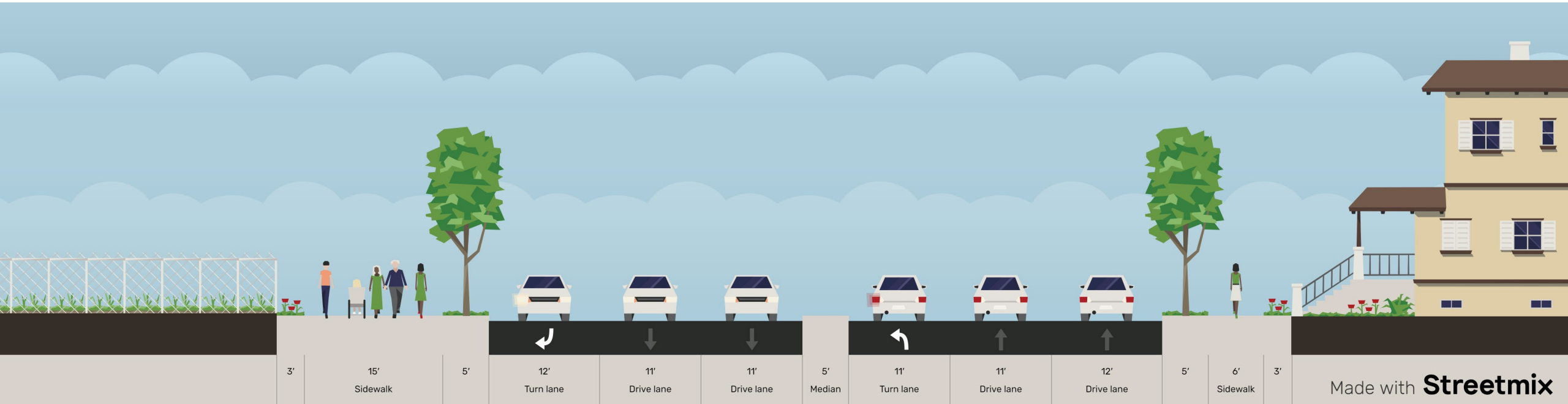


# ROADWAY RECOMMENDATIONS

# FOREST HILL DRIVE: RECOMMENDED THOROUGHFARE CROSS SECTION CONCEPT (110' ROW)



# FOREST HILL DRIVE: RECOMMENDED THOROUGHFARE CROSS SECTION CONCEPT – SCHOOL ZONE (WITH TURN LANES) (110' ROW)



# BICYCLE AND PEDESTRIAN INFRASTRUCTURE RECOMMENDATIONS

Install a shared use path on west side of Forest Hill Drive with room for pedestrians and cyclists to travel safely in both directions.

Construct sidewalk on east side of street.

Add other enhancements:

Crosswalk visibility improvements

Pedestrian signals

Pedestrian refuge islands

Intersection improvements

ADA upgrades

Shared-use path example



Image Courtesy of the City of Fort Worth

Pedestrian refuge island example



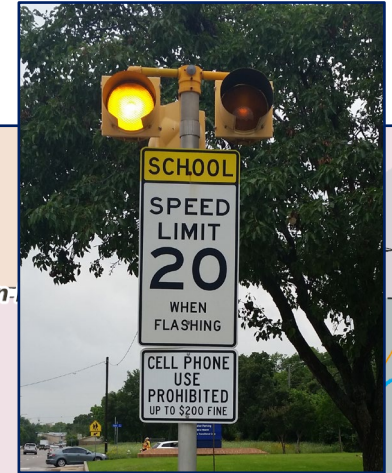
# SCHOOL ZONE RECOMMENDATIONS

School zones reduce pedestrian risk by lowering travel speeds near schools.

Expand existing school zone to extend from Royal Crest Drive to Chambers Creek Drive.

Upgrade existing school zone signage to flashers for increased visibility.

Perform maintenance on school signage obscured by foliage.



# NEXT STEPS

Approve planning recommendations

Move recommendations to design and construction

Analyze and review Everman Flood Study results to determine potential impacts to proposed roadway design, including bridge improvements

Continue to coordinate with the cities, landowners and developers along the Forest Hill Dr. corridor.

Coordination with the cities, TxDOT and Tarrant County for project implementation based on approved construction funding.



# PUBLIC OUTREACH

# ONGOING PUBLIC OUTREACH EFFORTS

Some components of our outreach campaign include:

Informational Project Webpage:

[www.publicinput.com/fhdstudy](http://www.publicinput.com/fhdstudy)

Press Releases

Newsletter Articles

Electronic Flyers

Social Media Posts

Promotional Meeting Material on Various Tarrant County Publications

Toolkit electronically provided to study area's three cities containing the above items for distribution in their local community newspapers, news articles, social media pages, webpages, etc.

All outreach material is provided in English and Spanish.





# INFORMATION OPTIONS

Comments or questions on information presented today?

Provide comments or questions:

Electronic comment form on: [www.publicinput.com/fhdstudy](http://www.publicinput.com/fhdstudy)

Online comment tool: [www.nctcog.org/mye](http://www.nctcog.org/mye)

In writing: **Forest Hill Drive Study, P.O. Box 5888, Arlington, Texas 76005**

To access the presentation in English or Spanish or for more information and to sign up for project notices: [www.publicinput.com/fhdstudy](http://www.publicinput.com/fhdstudy)

*\*\*Comments received between April 8<sup>th</sup> and May 8<sup>th</sup> will be included as part of the Public Meeting record. Comments received after will be considered but will not be included in the official record.\*\**



# CONTACT INFORMATION

## **Taylor Benjamin**

Communications Specialist II  
(817) 704-5672  
tbenjamin@nctcog.org

## **Shawn Conrad**

Principal Transportation Planner  
(817) 704-5695  
sconrad@nctcog.org

## **Jody Loza**

Program Manager  
(817) 704-5609  
jloza@nctcog.org

## **Helena Studmire**

Administrative Assistant  
(817) 608-2324  
hstudmire@nctcog.org

